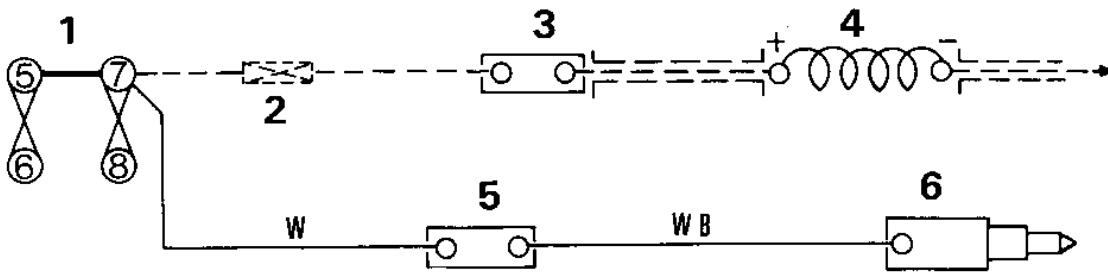


(AL.5)



178
2106

- | | |
|---------------------|-------------------------|
| 1 Fuse box | 4 Coil |
| 2 In line connector | 5 Resistor |
| 3 Filter unit | 6 Fuel cut-off solenoid |

Fig. 153 ¾-Ton 109 24 volt Land-Rover solenoid operated fuel cut-off valve