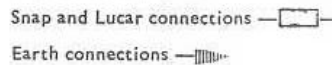


Fig. N1-7. Circuit diagram, 2½ litre 'Regular', 'Long' and Station Wagon, Petrol models, negative earth

- | | |
|--------------------------------------|---|
| 1 Starter motor | 27 Warning light, choke |
| 2 Solenoid, starter motor | 28 Feed, flasher lights |
| 3 Horn push button | 29 Voltage stabiliser, fuel gauge and temperature gauge |
| 4 Horn | 30 Switch, stop lamp |
| 5 Panel light, speedometer | 31 Wiper motor |
| 6 Switch, panel light | 32 Dynamo |
| 7 Panel light, instruments | 33 Warning light, ignition |
| 8 Side lamp, RH | 34 Warning light, oil pressure |
| 9 Side lamp, LH | 35 Switch, cold start on control |
| 10 Tail lamp, RH | 36 Fuel gauge |
| 11 Tail lamp, LH | 37 Temperature gauge |
| 12 Headlamp, RH, dipped beam | 38 Switch, wiper |
| 13 Headlamp, LH, dipped beam | 39 Switch, oil pressure |
| 14 Headlamp, LH, main beam | 40 Distributor |
| 15 Headlamp, RH, main beam | 41 Switch, cold start in cylinder head |
| 16 Warning light, headlamp main beam | 42 Fuel tank unit |
| 17 Battery, 12 volt | 43 Temperature transmitter unit |
| 18 Switch, ignition and starter | 44 Stop lamp, RH |
| 19 Switch, lights | 45 Stop lamp, LH |
| 20 Switch, headlamp dip | 46 Socket, wiper lead |
| 21 Inspection sockets | |
| 22 Fuse, A1-A2 (35 amp) | |
| 23 Fuse, A3-A4 (35 amp) | |
| 24 Feed, interior light | |
| 25 Regulator box | |
| 26 Ignition coil | |



Cable colour code

B—Black P—Purple W—White R—Red N—Brown Y—Yellow U—Blue G—Green L—Light